

Live Market Watch Solutions

User Guide

Live Market Watch is a new generation real time market information and reporting platform designed to meet the increasingly sophisticated needs of today's investment professionals. This has been designed in consultation with industry professionals and traders on the move to provide user-friendly interactive tool, for you to excel in the dynamic stock market.

Live Market Watch brings you feed from NSE right onto your mobile phone; LIVE for the first time in India.

You need to have GPRS subscription to be able to receive LIVE feed onto your phone.

As display size is limited on the mobile phone, the details of the scrip are shown in two screens. The first screen shows Last Traded Price (LTP) of 20 scrips of your choice.



To get details of any scrip, scroll down to the scrip of your choice then Press button '6' on your phone, you will be taken to the second screen which gives details such as buy quantity, buy price, sell quantity, sell price, LTP, volume, open, high, low, close for the chosen scrip.

There are two variants of the product:

LMW-Pro This gives LIVE info every second on the phone

LMW-Lite This gives LIVE info every 10 seconds

(This is the only difference compared to LMW-Pro in which screen refreshes every second)

LMW-Pro

The first screen in LMW-Pro gives Scrip name, LTP, Arrow and Price Change. LMW-Pro will not display arrow and price change in phones with small display.

LTP

This is the Last Traded Price (LTP) of the scrip

Color Information


■ - Increase in price compared to previous price of LTP

■ - Decrease in price compared to previous price of LTP

Arrow

▲ This gives indication of increase or decrease of price (LTP) with respect to previous days close price

▼



Stock	Price	Change
INFOSYSTCH	2075.50	12.45
BHEL	1524.85	34.55
TCS	1088.50	1.45
ONGC	1176.50	23.75
SBI	897.45	4.55
MARUTI	791.40	2.55
TATAMOTORS	791.40	28.45
TATYAMCOMP	711.45	44.85

Price Change

This is the difference between LTP and previous days close price. This gives indication of price change with respect to previous days close price

Scrip Details

You can watch details of any scrip. To watch the details of any scrip, please scroll down to that scrip and press button "6" on your phone.

The second screen giving scrip details is shown with the following details.

Buy Quantity, Buy Price, Sell Price, Sell Quantity, Last Traded Price, Volume, Open, High, Low, Close



Color Information:

Buy Quantity or Buy Price

■ - Increase in price compared to previous price of Buy Quantity or Buy Price

■ - Decrease in price compared to previous price of Buy Quantity or Buy Price

Sell Quantity or Sell Price

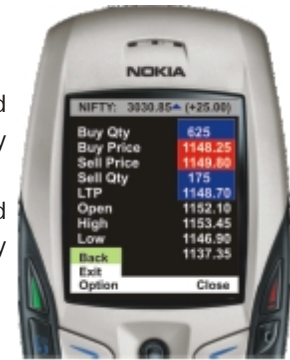
■ - Decrease in price compared to previous price of Sell Quantity or Sell Price

■ - Increase in price compared to previous price of Sell Quantity or Sell Price.

When you are on second screen, this gets refreshed automatically. You can be in this screen as long as you want. When you complete watching the details of this scrip, please press back to go back to first screen. First screen will be displayed with LIVE data.

Modification of scrip list (watch list)

You can watch a maximum of 20 scrips at any time on your phone. You may have anywhere from 1 to 20 scrips in your watch list.



Following features will help you modify scrip list and index:

Add Scrip

Press Options/Menu/Add scrip to add scrips to your list. Enter first three characters of the scrip that you want to add. You will get list of all the scrips that start with first three characters entered by you. Scroll down to the scrip that you want to add press options/submit



Delete Scrip

Press Options/Menu/Delete scrip to delete scrips from your list. You will get list of all scrips in the watch list. Scroll down to the scrip that you want to delete and press options/delete list.



Modify Index

You can modify index that is being displayed on top of the screen. To do so, press options/menu/modify index. You will get list of six indices.

Scroll down to the one that you want to watch and press options/submit

Set Price Alert

You can set two price alerts for each scrip in your watch list. The price alerts can be set on lower/higher side of LTP or both on either lower/higher side.

To set the price alert, please scroll down to the scrip and press '3'. Enter the price at which you want alert. LTP is displayed at the bottom for your reference.



You will get alert in the form of a new pop-up window on the screen when the



LTP touches the alert price. Some phones also support sound and vibrate alert.

Intra-day Graph

You can watch intra-day graph of any scrip that is in watch list or the index that is on top of the screen. To watch the graph of any scrip, please scroll down to the scrip and press button "9".

The graph will be shown for the selected scrip from 9:55 AM to the current time/end of market.

To watch the graph of the index which is on top of the screen, press "4". If you want to watch the graph of any other index, please modify the index first and then press "4".



Settings

There are two modes of receiving data. Please press options/settings and select one of the following.

Continuous mode: In this mode, the screen gets refreshed every second. You will not be able to receive incoming calls. The caller gets a message "the number is not reachable". This mode is selected by default.

To receive calls in this mode use Pause/Start options explained below.

Discontinuous mode: In this mode, your screen gets refreshed for 5 seconds and then stops receiving data for 5 seconds. This continues alternately, so that you can receive voice call as well as receive stock update. If you don't want to miss calls, please select this mode.

Pause/Start Mode

When application is in continuous mode you will not be able to receive incoming calls. The continuous mode enables you to receive data without any interruptions. But after watching data for some time, you may want to switch to voice mode. You need to pause to go to voice mode. To do so, please press options/pause.

The data stops coming as soon as you switch to pause mode. You will receive incoming calls when you are in pause mode. To return back to data mode to receive data, please press options/start. The data will start coming without any interruptions. You will not be able to receive

voice calls in this mode. The application can be in pause mode only for 30 minutes.

When application is running, you will not be able to make outgoing calls. But you will be able to receive incoming calls. Whenever you want to make outgoing calls, please press options/pause. The data stops coming as soon as you switch to pause mode. You will be able to make outgoing calls when you are in pause mode.

To return back to data mode to receive data, please press options/start. The data will start coming without any interruptions. Also you will be able to receive incoming calls.



Subscription process

Subscribe to LMW-Pro or LMW-Lite

Please go through the following details.

GPRS Subscription and configuration of your phone

- ◆ Please call your operator and inform that you are interested in GPRS subscription (*contact our call center at 080-2223 2222 to know which GPRS plan to subscribe for*)
- ◆ Follow instructions given by your operator to subscribe to GPRS
- ◆ You will have to pay monthly fee to your operator to get GPRS service
- ◆ After you submit request for enabling GPRS, your operator will take anywhere from 0 to 48 hours to enable GPRS
- ◆ After GPRS is enabled, you will get GPRS settings from your operator
- ◆ Please save the settings on your phone and check whether you are able to open www.google.com
- ◆ If you are able to open www.google.com, you are ready to download LMW-Pro or LMW-Lite application

LMW-Pro Download process

Go to browser and type

www.livemarketwatch.com/lmwpro1.jad

Go to options and press download. The application gets downloaded and you will be asked whether to install the application - Please Install the application.

LMW-Lite Download process

Go to browser and type

www.livemarketwatch.com/lmwlite1.jad

For Blackberry, download

www.livemarketwatch.com/lmwprobb1.jad

Go to options and press download. The application gets downloaded and you will be asked whether to install the application - Please Install the application.

Registration for free trial

All users have to first register either on web or through our sales agent. After registration, Live Market Watch will send the user ID and password to the user by SMS. Users can make payment either on phone or on web using their credit

card. Users can also pay by demand draft. Cheques are not accepted as outstation cheques take long time for clearance and fee associated is relatively high compared to monthly subscription fee.

Running the application

Live market watch will send you login ID and password by SMS after you subscribe to the free trial.

After successful installation, open the application (select application, press on options/open). You will be asked to enter login ID and password. After entering the same, press on options/connect. Now you are ready to receive the NSE data.

Payment

You can pay your monthly subscription fee in any of the following method. You can switch between any of the following methods as per your convenience, whenever your subscription period expires.

You need to have user ID to make payment.



By Credit card

On internet : You may visit

www.livemarketwatch.com/paynow.htm on your PC and make the payment by credit card

On mobile phone:

After you download the application, please open the application and go to options/payment and make the payment by credit card

By Draft

You may courier the draft to Live Market Watch Solutions. The demand draft should be in favor of "Live Market Watch Solutions", payable at Bangalore. You may check the amount from subscriptions page.



All Trademarks and logos belong to the respective owners